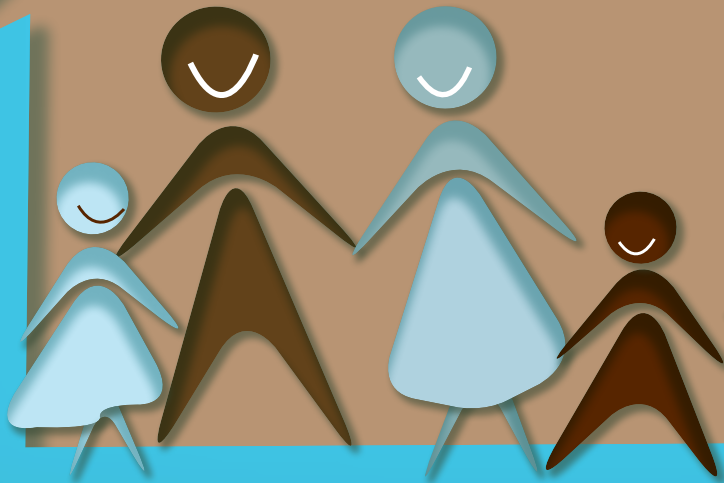


# FAMILY CHALLENGE



# FAMILY CHALLENGE



**FAMILY CHALLENGE** is a **global STRATEGIC COLLABORATION** which aims to **TRANSFORM** communities around the globe by **HELPING THE CHURCH** to **BUILD FAMILIES** according to God's design and **EQUIP FAMILIES** to be **AGENTS OF CHANGE, IMPACTING THEIR COMMUNITIES** for Christ.

# INVITATION & CALL

**The family and the church are the two institutions  
God created to advance His kingdom.**

Statistics worldwide clearly show that Satan is rapidly gaining ground in destroying the church by ruthlessly attacking the family.

Setting its sight on the transformation of communities around the globe, the Transform World Connections movement (together with the 4/14 Window Global Initiative) recognizes the urgent need to restore the Christian family in the global church, under the auspices of Family Challenge, to their rightful place where they not only live a godly life (including passing on the faith to the following generations), but also have the capacity to heed the call to be the transformational agent that significantly impacts communities around the globe for Christ.

This is a kairos moment – it is now time for the global church to respond to God's call to restore the Christian families in the church.



**Dr Luis Bush**  
*International Catalyst*



The Old Testament closes with a great promise and a warning. The promise is that a prophet in the spirit of Elijah (John the Baptizer) will come and restore the broken relationship between the fathers and their children. But, if that doesn't happen, God warns that He will come and strike the land.



**Pastor Daniel Kim**  
*Chairman  
Transform World  
Steering Committee*

These are sobering words regarding the absolute importance of the family, especially in the last days. Through the Family Challenge we hope to do the following:

- Refocus the churches worldwide on this crucial work of family ministry.
- Facilitate connections among people (the 'brave hearts') across the world who have received the call of God to stand against the satanic onslaught on the Church and the family.
- Encourage God's people to persevere in the sacred task of protecting and building the family as we place our hope in the Lord Jesus Christ.
- Facilitate global sharing of family ministry resources and expertise so they can be released for the work of God's Kingdom.
- Demonstrate the power of the Christian family as God's mighty agent of evangelism in our communities.

**We watch as marriage after marriage in our churches flounder and fail, as our young people leave their faith, as church leaders' families fall apart.**

When leaders and members struggle under the weight of the strained family relationships, the Church becomes dysfunctional. It cannot regenerate itself and families cannot transmit faith effectively to the next generation. This thwarts God's plan in '*seeking godly offspring*' (Malachi 3:15) to demonstrate who He is.

The family began right after creation. Since then, it has been under relentless satanic attack. These demonic activities are pervasive, affecting the church worldwide, rendering it ineffective as salt and light to the world.

To meet this onslaught, we are connecting family ministry leaders across the world to rally around the **challenge to restore the family** to its redemptive purposes, in partnership with the church.



**Matthew Ling**  
*Facilitator  
Family Challenge*



We do this, believing that God has already issued a call to His servants in various parts of the world, a call to stand against the satanic onslaught on the family, and thus, the Church.

Here, we extend this invitation to you to be part of a global team leading the thrust in this **Family Challenge**.

On these pages, you will find information describing the vision, plans and steps which we envision for the **Family Challenge**.

We invite you to prayerfully consider joining us at this crucial hour to serve the families of the world.



# FAMILY CHALLENGE **MISSION**



**REVITALISE THE CHURCH to build FAMILIES  
according to God's design and equip families  
to be AGENTS OF CHANGE, impacting their  
COMMUNITIES for Christ**

# VISION

- To see church leadership and members jointly champion godly families
- To inspire and equip the church and families with a biblical perspective of their roles
- To populate the world with thriving Christian families which will transform their communities

## National

**Form Family Challenge national leadership teams who will:**

- Bring to fruition the Family Challenge vision for their nations.
- Raise Family Challenge champions among churches in their nations.
- Inspire and equip churches and families to fulfil their biblical mission.

## Local church

**See a shift in culture within the leadership of each local church as they:**

- Embrace a biblical theology of family.
- Augment the health of the families within their churches.
- Equip believers to live for Christ within their homes.
- Develop a culture of corporate prayer and intercession for families.



**See family champions raised up in churches who will mentor and equip in the area of family life, to ensure:**

- Christian marriage is honoured, celebrated, protected and prioritized.
- Parents grow as followers of Christ and lead in discipling their children.
- Children honour their parents and care for them in their old age.
- Grandparents fulfil their biblical role as spiritual leaders and mentors for future generations.
- Parents teach biblical principles of sexuality to their children and parents and children live out these principles.
- Families embrace and live out biblical principles of stewardship in all areas of life.
- Non-nuclear families thrive in lifelong family relationships.
- Churches accelerate care and ministry for families with unique needs.

## Individual families

See a culture shift in individual families where:

- Married couples grow strong in marriage, taking responsibility for their own marital health.
- Parents assume their roles as primary mentors for their children's development and spiritual growth.
- Children are holistically and systematically developed within an effective infrastructure.
- Family worship is a way of life.
- The family impacts its community with its lifestyle.



# BIBLICAL FOUNDATIONS

These are the convictions which undergird the Family Challenge strategic plan.

- 1 The ultimate purpose of the family is to establish God's fame throughout the world.
- 2 The purposes of the local church are (1) to worship God, (2) to live as a biblical community, and (3) to evangelise the world.
- 3 The church and the family are partners in building a godly home.
- 4 Human sexuality, which is a good creation of God according to His purposes, to be enjoyed within the bounds of a covenant marriage, has come under severe satanic attack. We are called to uphold sexual purity according to the Scriptures.

- 5 A life-long one-man-with-one-woman marriage needs to be intentionally developed.
- 6 The primary purpose of parenting and grand-parenting is to nurture the faith of the next generation.
- 7 Children are to honour their parents.
- 8 Singlehood within the church community is to be respected.
- 9 The Christian families are called to be faithful stewards of the resources (time, opportunities, and others) that God entrusts to them.
- 10 Home leadership is a key to effective church leadership.
- 11 Every family is created by God to be missional, to be the salt and the light to the world.

# STEPPING FORWARD

Most of us may not have experienced a church life where family and church function in harmony. But God has definitely given us the blueprint to strive for. It is for us to turn to Him to '*...ask for the ancient paths, ask where the good way is, and walk in it...*' (Jeremiah 6:16).

The Family Challenge involves more than merely responding to family life needs through ad hoc programmes.

Its success requires the family to return to God-prescribed patterns (Ephesians 5:22-6:4, Deuteronomy 6:4-9), and the church to become the family-building equipping centre, '*... to prepare God's people for works of service, so that the body of Christ may be built up...*' (Ephesians 4:12). The family and the church must work in harmony.

The journey we propose to take is divided into three phases:

- **PHASE 1: Preparing for culture shifts within the church and the family**
- **PHASE 2: Making the cultural shifts**
- **PHASE 3: Establishing the new family and church cultures**

Implementation covers these levels: church leadership, congregation, and family.

## PHASE

# 1

### Preparing for culture shifts

The effectiveness of the Family Challenge depends on a successful partnership between the family and the church, and on a readiness to make the cultural shifts.

- **Within the Church**

While many Christian leaders give mental assent to the importance of Christian families in the redemptive plan of God, they often crumble in their resolve to support these families on a practical level.

Churches often attempt to address family-life needs by implementing an ad hoc programme. Stand-alone programmes, however, do not ensure the long-term effective development of healthy families with the capacity to be agents of change in their communities.

To develop the transformational capacity of each family, the church must do better. A paradigm shift is needed wherein the church invests substantial manpower and other resources into equipping families.

A cohesive and comprehensive strategy is needed to position the corporate church to fulfil the vision of the Family Challenge. We need to give family development a prominence on par with other emphases such as the small group, worship, preaching, prayer, etc.

Appropriate human resources needs to be allocated within the church to manage, allocate and execute strategies with a long-term view, to manage personnel training and to run programmes to strengthen marriages, parenting, faith formation, human sexuality, care of the elderly, etc.

- **Within the family**

Making the shift to a biblical family poses a challenge for many families.

Changing the family culture is one of the toughest tasks we will face in this journey. It will require families to reprioritize goals, reallocate resources, etc. It is resource consuming and will depend on each family's capacity for change.

We need to prepare families for change. Experience tells us that education and motivation are needed to persuade married couples to build stronger marriages, to convince parents to equip

themselves for their parental role, and stakeholders to invest in systematic and holistic development of children.

Families need teaching and adequate supporting infrastructures, as well as strong leadership to bring them through this process.

*Appendix 1 outlines the strategies on 'Preparing For Culture Shifts within the Church and Family' (see page 22).*

PHASE

2

## **Making the cultural shifts**

*Appendix 2 offers strategies for 'Making The Cultural Shifts' (see page 24).*

PHASE

3

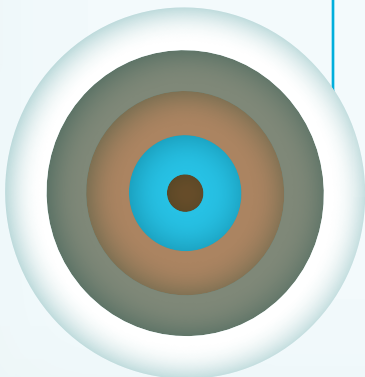
## **Establishing the new family and church cultures**

*Appendix 3 offers strategies for 'Establishing The New Family and Church Cultures' (see page 27).*

# EXPECTED OUTCOMES 2020

We have set these goals:

**Strong  
leadership  
base for  
global Family  
Challenge**



- The global Family Challenge organisation structure – consisting the Advisory Council, Regional and National Facilitation Teams (RFT and NFT) – is formally formed, and functions effectively to support the global National Family Challenge Facilitation Teams.
- National Facilitation Teams are formed in the top 20 countries (U.S.A, Brazil, Mexico, Russia, Philippines, Nigeria, China, Congo (Democratic Republic), Germany, Ethiopia, Italy, United Kingdom, Colombia, France, Ukraine, Spain, Poland, Argentina, Kenya, and India) which make up 66% of the world's Christian population, and other nations which are ready for this.

## **Rapid spreading of a passion for family ministry**

- The NFTs and other facilitators are actively challenging the churches and the families in their nations on the purpose, vision, theological foundations, and the ideals of Family Challenge.
- NFTs are actively formulating and implementing plans to support local churches in meeting immediate family felt needs.
- The Home Leadership Initiative is launched and spreading.
- Family Prayer culture is evolving into a worldwide movement.

## **An effective global support infrastructure**

- Trainers are prepared to deliver the curriculum which aims to change the cultures of the corporate church (at the leadership and congregational levels) and the family.
- The template for developing comprehensive family ministry in the local church is developed and ready for use.
- A resource center offering culturally-sensitive family ministry resources is available to every nation where NFT operates.

## Model churches

- An effective support infrastructure is established for each nation where NFT is active. This includes the administrative infrastructure, the national resource centre and training hubs, corporate communications, and a funding structure.
- Model Family Challenge churches in all nations where NFTs are established by the end of 2015.



# TIME TO ACT



The task ahead is immense.

The family is an area that has been largely sidelined in the last few centuries. What we are proposing to do under the Family Challenge is counterculture. Therefore, it will take more than a few years to accomplish what we are setting out to do in any local church.

We know there are no quick fixes for the broken family cisterns and for the church that is rediscovering her destiny concerning families.

But, God has made a clarion call to all of us to step forward. It is a historic moment.

Would you join rank with us in heeding this call?

## APPENDIX 1

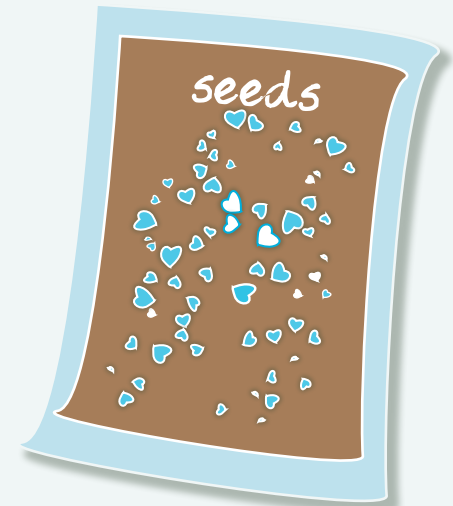
# PREPARING FOR CULTURE SHIFTS WITHIN THE CHURCH AND FAMILY

- **Build a strong Family Challenge leadership base.** This requires the establishing of leadership teams committed to the Family Challenge vision, who seek to equip people for the tasks.
- **Fan the awakening fire within churches and families.** The strategy is to prepare the hearts of church and families (which may be at varying levels of readiness to embrace the Family Challenge culture). It consists of the following actions:
  - Challenge the church and the family on the purpose, vision, and theological foundations of the biblical family. This may be done in a variety of ways such as special seminars, written literature, etc.
  - When it seems impossible to get top leadership involved, provide all church participants with strategies and tools that will enable them, in their spheres of influence, to contribute to maximizing the family emphasis.
  - Formulate plans to meet the immediate needs of family life within the local church, in areas including marriage, parenting, teen promiscuity, divorce, and effective resource management in the home.
  - Establish the culture of consistent prayer and intercession for families in the corporate church and home settings. We need to initiate a family prayer movement within the church and the

family, raising a concerted cry to God:  
*'Will you not revive us again, that your  
people may rejoice in you?' (Psalm 85:6).*

- **Provide tools for changing the cultures of the corporate church and family.**  
This includes training church leaders and congregation for change, challenging married couples to build strong marriages, and developing parents to proactively disciple their children.
- **Design an effective system to develop comprehensive family ministry in a local church.** This consists of a systematic structure (including a milestone and metrics system for measuring progress) of family development.
- **Identify useful and relevant resources to support churches and families within specific cultural contexts.** This covers faith formation, marriage, parenting, human sexuality, stewardship, non-nuclear family, aging, and being missional.

- **Create an effective support infrastructure.**  
This includes the administrative infrastructure, national and regional resource centres and training hubs, corporate communications, and a funding structure.
- **Establish the network of churches.** A key success factor, the network consists of like-minded churches who are committed to the Family Challenge ideal and practising family ministry.



## APPENDIX 2

# MAKING THE CULTURAL SHIFTS

### Within Church Leadership

- **Include the top leadership in the whole Family Challenge process where possible.** Involvement of top leadership maximizes culture change and should be considered a priority.
- **Provide tools to ascertain the health of families in the local church.** Churches are often strengthened first by evaluation. Evaluation provides information on the current state of health of families, creates awareness among the leadership of the pertinent family life needs, which can then form the basis for planning. Evaluation can be done through surveys or self-assessment.
- **Equip leadership to formulate Family Challenge ideas and plans specific to the local church environment.** These strategies may draw from the survey results. Then short-, medium-, and long-term family life plans can be prepared.
- **Establish prayer and intercession supports for the leadership in this endeavour.** Persistence is critical, especially for the necessary heart-shift.
- **Engage the church leadership in raising up a team of Family Challenge leadership team.** Different groups of champions are trained for various family needs in the church.

- **Have church leaders implement the Family Challenge strategies in their own homes.**

This leadership-by-example step is a key success factor to establishing Family Challenge culture in both the corporate church and the home.

### Within Church Congregation

- **Explain to the congregation the key findings of the family life survey/assessments.**

This helps create a sense of urgency for the congregational shift.

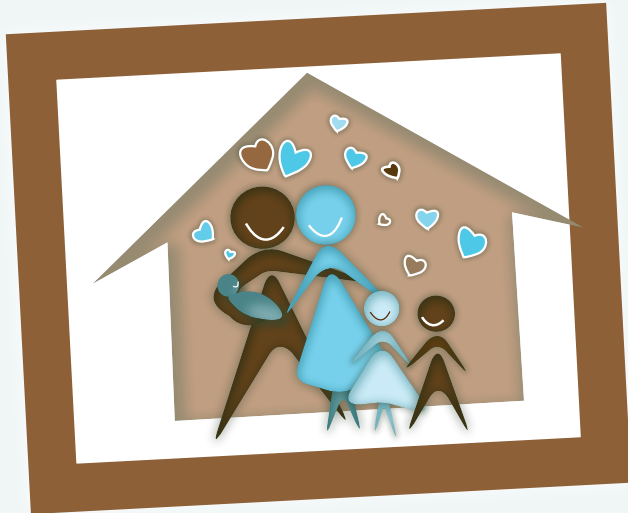
- **Challenge the whole church to embrace the importance of the family.** The leadership of the church is visibly involved in setting the direction of the church for the strategies ahead.
- **Teach and challenge the congregation on the Family Challenge culture.** This covers the theology of the family, church-home partnership, marriage and parenting and what that means to them as a body of Christ.

This may be done through sermons, special training sessions, Bible classes, literature, etc.

- **Execute corporately the plan that cultivates the culture of praying for family life needs.** This is a build-up on what has already been done in the process.
- **Establish receptivity to biblical conflict-resolution.** This prepares the church for possible conflicts that could arise because of the resistance to changes under the new culture.
- **Implement the specific family life plans of the church.** This process will cover all key areas of family life over a fixed future period.
- **Uphold and sustain the image of the Family Challenge emphasis in corporate church life.** This may be accomplished through public displays on the emphasis at the church premises, grand celebrations of special family-related days (Mother's, Father's Day, etc.), family milestone events involving the church, and so on.

## Within Families

- **Train on establishing leadership at home.** This includes teachings about roles and responsibilities of husbands, wives, and other adults in the home, as well as the formulation of mission, vision, core values, and plans for the home.



- **Teach and challenge the family on the Family Challenge culture.** This includes the theology of the family, church-home partnership, and the building blocks of a strong Christian home.
- **Establish prayer in the home.** This encompasses training in spiritual warfare at home, establishing family rituals and traditions (including family devotion) and faith conversations.
- **Participate in family equipping programmes.** Family members are equipped by the church in various family life areas to live the Family Challenge lifestyle.

## APPENDIX 3

# ESTABLISHING THE NEW FAMILY AND CHURCH CULTURES

To make the Family Challenge culture a permanent part of the church body and the home requires the following:

- **Regularly monitor the progress of the cultural shifts with appropriate corrective actions where needed.** A long-range perspective is needed, with regular evaluation to ensure that plans continue to operate effectively.
- **Celebrate successes and sustain momentum.** This is to take place at the church leadership, congregational, and family levels, to spur the momentum created.





---

For further information, please contact:

**Matthew Ling**

EMAIL [matthewling.life@gmail.com](mailto:matthewling.life@gmail.com)

SKYPE [matthewling1](#)

MOBILE +601 9887 3585

All rights reserved © Copyright 2013 Family Challenge